



WELLNESS ON WHEELS
INDIA'S 1ST COMPACT "HOSPITAL ON
WHEELS" WITH MULTI SPECIALTY
DIAGNOSTICS

Powered By PHOENIX MICROSYSTEMS



Overview

▶	About US	03
▶	BACKGROUND	05
▶	OUR SOLUTION	06
▶	INTRODUCTION TO MMU	07
▶	KEY FEATURE	08
▶	LIST OF PARAMETERS	10
▶	BENIFITS	14
▶	TELE-CONSULTATION	16
▶	DIGITAL RECORD OF PATIENT MEDICAL HISTORY	17

A modern office hallway with a white chair, a framed sign, and a potted plant. The hallway is long and brightly lit, with a polished floor that reflects the light. The walls are white, and the ceiling has recessed lighting. A potted plant is placed in the hallway, and a white chair is visible in the foreground.

ABOUT US

Phoenix Microsystems (PMS) (Founded in 2005), is promoted by well know business groups and young techno crafts having diversified experience in the field of development, maintenance and product development. PMS provides a complete end-to-end solution to address all the industrial needs of all businesses. PMS is committed to providing a unique package of cost- effective solutions, quality service and complete satisfaction to customers by continuous innovation and R & D, focusing on end to end user needs and building strategic partnerships with solution providers and system integrators.

With a strong focus on integrating advanced technologies like IoT, AI, and data analytic. Phoenix Microsystems specializes in manufacturing and deploying cutting-edge devices such as health kiosks, Multi Purpose kiosk's, smart beds, vending machines, Water ATM and other intelligent systems designed to enhance Community living and streamline essential services.

OUR CLIENTALE



उत्तराखण्ड शासन



સત્યમેવ જયતે
ગુજરાત સરકાર
Government of Gujarat



सत्यमेव जयते
Government of the National
Capital Territory of Delhi



Indian Navy



महाराष्ट्र शासन



BACKGROUND OF THE HEALTHCARE FACILITY

India's healthcare background is a mix of achievements and challenges shaped by its vast population, diverse geography, and socio-economic disparities. The country has a dual healthcare system comprising public (government-funded) and private providers.

The government provides various healthcare facilities to rural and remote areas through initiatives like Primary Health Centres (PHCs), Health and Wellness Centres, Mobile Medical Units (like Firta Dawakhana), and schemes such as Ayushman Bharat. These services aim to ensure that even the most underserved populations have access to basic medical care, free medicines, vaccinations, maternal and child health services, and preventive care.

However, a major challenge remains: lack of awareness among rural populations. Many people in these areas are still unaware of the health services available to them or do not prioritize their health due to traditional beliefs, low literacy levels, and poverty. As a result, they often delay seeking treatment, rely on unqualified practitioners, or ignore preventive measures.

SOLUTION WE PROVIDE

**INDIA's 1ST COMPACT SOLAR POWERED MOBILE MEDICAL
UNIT "HOSPITAL ON WHEELS" WITH MULTI SPECIALTY
DIAGNOSTICS**

www.phoenixmicrosystems.com

SOLUTION WE PROVIDE

HOSPITAL ON WHEELS

PHOENIX take pride in introducing the most compact HOSPITAL ON WHEELS with Multi Specialty Diagnostics, Hospitals on wheels, or mobile healthcare units, have the potential to revolutionize health services in Rural, Urban areas & smart cities by making high-quality medical care accessible, timely, and more efficient. These mobile units are essentially clinics or small hospitals that travel to various locations, providing essential healthcare services to people who may otherwise struggle to access traditional hospitals due to geographic, economic, or logistical barriers. Hospitals on wheels bring healthcare right to people's doorsteps, integrating seamlessly with other rural & urban health and wellness initiatives.

Hospitals on wheels can deploy regular, scheduled visits to the particular areas, bringing primary healthcare, screenings, diagnostics, and even specialist consultations to the residents who need them most. This eliminates travel time, reduces costs for patients, and can help alleviate the pressure on crowded city hospitals. Moreover, by connecting with the city's health data systems, mobile hospitals can keep records of patient visits, manage follow-up appointments, and track overall health trends in real-time, enabling more informed health planning for rural and urban administrators.

KEY FEATURES



01

COMPACT model enables instant services in the field, which will reduce the patient waiting, as people wait for MOBILE vehicle to come to their area, and would like to have services as early as possible so that they do not sacrifice their daily labour works, which will cut down their income.

02

All medical and lab equipment's are in built this HOSPITAL ON WHEELS, by integrating all the devices using our state of art in-house IHMS (Integrated Health Management System), which will help to have a consolidated Patient Real time data, and also connect with the nearby Government hospitals, to take up Referral mechanism for Secondary and Tertiary care.

03

Taking health care to HOME will enable people living in remote areas to get the benefit of Multi-Specialty Diagnostics at their door step, without losing their daily bread and reach a far-away health centre, and also enables them to start on instant medication and treatment.

04

Reduces the PER PATIENT COST, as our entire systems is built in with a combination of Invasive and Non Invasive diagnostics, which helps to cut down the overall investment and operational costs on day to day basis.

COMPONENTS OF COMPACT HOSPITAL ON WHEELS WITH MULTI SPECIALTY DIAGNOSTICS

- **Mobile Vehicle** – TATA 710 LPT (19' X 7' X 8')
- **Power Supply** – Solar based power back up supply
- **Back-up power** – 4 KVA Generator
- **Ambience** – Centrally Air conditioned.
- **Privacy** – Lab, X-ray and Breast cancer screening secured and privacy based cubicle.
- **Furniture** – Lab & Breast cancer screening set up X – Ray infra and cubicle
- Doctor / Data entry operator / pharmacist / staff & patient waiting tables and chairs
- Racks for storage of devices and instruments
- Laptops – 3 laptops (branded) for software operations
- Publicity & awareness – LCD TV display for publicity and run through
- Internet – In-built Wi-Fi Modem
- **Patient waiting** – Expandable both side tents for patient waiting
- **Branding** – Customized branding services

MEDICAL, LAB & MULTI SPECIALTY DEVICES

- **Health KIOSK** – C Shape Latest model for Mobile
- **Lab Equipment's** – Bio Chemistry / Auto Hematology and Dry Fluorescence Immunoassay Analyzer Blood Mixer and accessories along with medical and clinical accessories for FIRST AID Kit.
- **ORCAM** – Oral Camera for screening
- **Eye Care** – Eye Care Testing Kit
- **X Ray** – Mobile Roof mounting Non-invasive X Ray unit
- Breast Cancer screening – NIRAMAI Non-Invasive screening Artificial Intelligence based THERMALYTIX, using temperature distribution on skin for early detection of cancer.
- Digital Camera with Lap top.
- **MOT** – Medical Observation Table
- **Software** – IHMS (Integrated Health Management system) State of art in-house software, with complete device integration and Government centres.
- **Pharmacy** – In-built pharmacy rack for stocking and Disbursement

LIST OF PARAMETERS

HEALTH KIOSK TEST PARAMETERS: NON- INVASIVE TEST PARAMETER

Basic Vital Checkup

1. Height
2. Weight
3. BMI
4. BMR
5. Body Water
6. Fat free weight
7. Muscle Mass
8. Skeletal Muscle
9. Body Fat
10. PSUBFAT
11. Visceral fat
12. Bone Mass
13. Body temperature
14. Oxygen
15. Pulse
16. BP Diastolic
17. Bp Systolic
18. Basal Metabolic rating
19. Metabolic Age
20. Protein
21. Physical rating
22. Alcohol test
23. 12 lead ECG test

Image visualization test

1. Ear , Nose, throat Visualization
2. Skin and Nail Image Capturing
3. ORACAM Dental checkup
4. Non- Invasive Breast cancer test

Risk assessment test (Questionary based test)

1. HIV Risk test
2. Lung Cancer Risk Test
3. Breast cancer risk test
4. Brain cancer risk test
5. Tumor risk test
6. Cervical Cancer Assessment
7. Heart disease Risk test
8. Covid risk test IQ Test

Urine Test

1. Glucose
2. Ascorbic Acid
3. Bilirubin
4. Ketone
5. Specific Gravity
6. pH
7. Protein
8. Urobilinogen
9. Nitrite
10. Leukocytes

HEALTH TEST PARAMETER INVASIVE TEST PARAMETER

Rapid test

1. Malaria Test
2. Typhoid Test
3. HIV I & II Test
4. Chikungunya
5. Leptospira
6. Dengue Nsl
7. Dengue IgM/ IgG
8. Hepatitis B
9. Hepatitis C
10. scrub typhus
11. Syphilis

Blood test

1. Glucose test
2. Hemoglobin test

Lipid profile test

1. Total cholesterol
2. Low-density lipoprotein (LDL)
3. High-density lipoprotein (HDL)
4. Triglycerides
5. LDL HDL Ratio

ADVANCED DIAGNOSIS LAB: NON-INVASIVE TEST PARAMETER

Portable Digital X-Ray

1. Contagious disease (Tuberculosis)
2. Lung abnormalities (Atelectasis ,Lung Opacity (Consolidation, Infiltration) ,
3. Pleural Effusion Nodule/Mass) Cardiovascular (Cardiothoracic Ratio & Cardiomegaly)

LIST OF PARAMETERS

ADVANCED DIAGNOSIS LAB: INVASIVE TEST PARAMETER

• Biochemistry Analyzer Test

- **Lipid profile (Basic)** (HDL, LDL, Triglycerides, Cholesterol)
- **Lipid Profile (Advance)** (ApoA1, APOB)
- **Kidney profile function test (basic)** (Urea, Uric acid, Creatinine, Calcium Potassium, Micro albumin, Micro Protein, Phosphorous)
- **Liver profile/Function test (Basic)** (SGOT/ALT, SGPT/AST, Alkaline Phosphate, Bilirubin Total & Direct, Albumin, Total protein)
- **Liver profile/ Function test(Advance)** (Amylase, Lipase, LDH)
- **Diabetic profile** (Glucose, HbA1c)
- **Myocardial infraction** (Ck-Mb)
- **Muscle Damage / Monitor traetment** (Ck-NAC)
- **Inflammation in acute / Chronic disorder** (CRP)
- **Rheumatoid Arthritis** (RA/RF)
- **Strep infection** (ASO)
- **Risk of poisoning** (Cholinesterase(S.L.))
- **Nutrition's deficiency** (ZINC, COPPER)
- **Anemia** (TIBC,IRON)

Dry Fluorescence Immunoassay Analyzer (Invasive Test)

- **Cardiac** (cTnI, cTnI/CK-MB/Myo, NT-proBNP, D-Dimmer)
- **Thyroid** (T3, T4, TSH)
- **Bone Metab olism**(25OH-VIT-D)
- **Fertility** (B-HCG, AMH, LH, FSH, PRL, Progesterone)
- **Diabetes**(HbA1c)
- **Inflammation**(CRP, PCT, IL- 6)
- **Tumor**(PSA)
- **Iron Metabolism** (Ferritin)

Sickle Detection Analyzer

CBC analyzer test (Invasive Test)

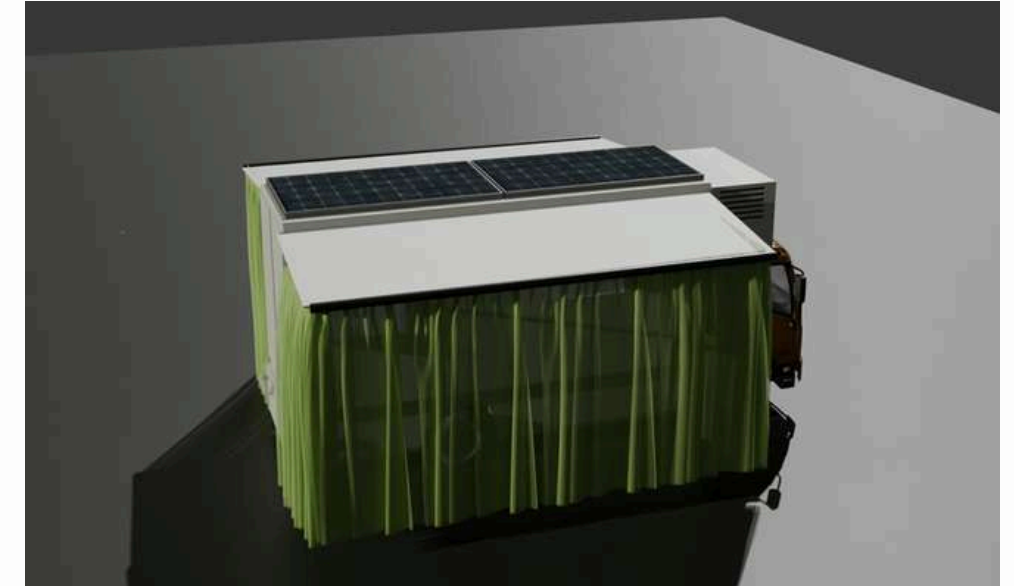
- White blood cells (WBC)
- Lymphocytes (LYMPH#)
- Mid cells (MID#)
- Granulocytes (GRAN#)
- Percentage of lymphocytes (LYMPH%)
- Percentage of mid cells (MID%)
- Percentage of granulocytes (GRAN%)
- Red blood cells (RBC)
- Hemoglobin (HGB)
- Hematocrit (HCT)
- MCH
- MCHC
- RDW-CV
- RDW-CV
- RDW-SD
- PLT
- MPV
- PDW
- PCT
- P-LCR



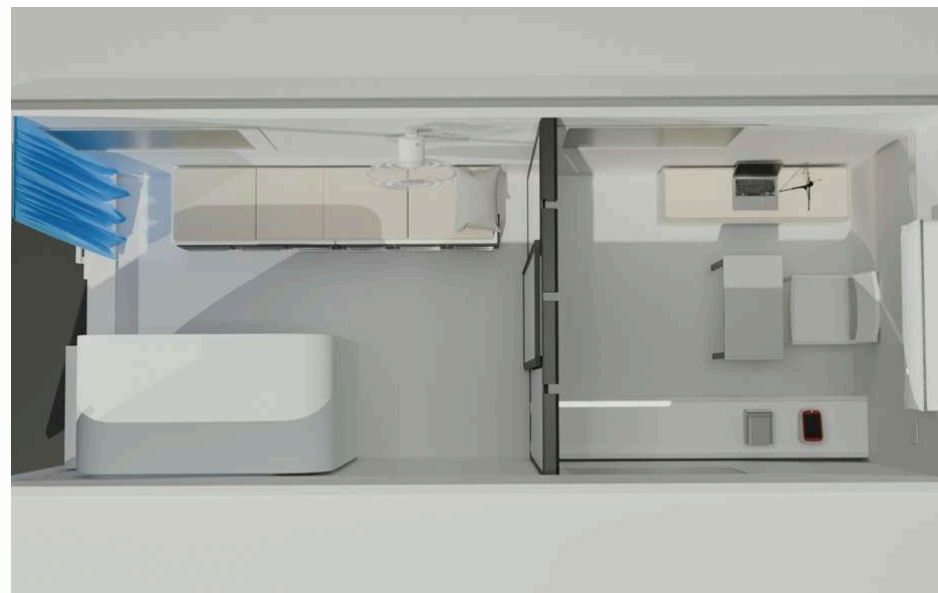
**INTERNAL REAR VIEW
IMAGE**



**EXPANDABLE CURTAINS
FOR PATIENT WAITING**



**SOLAR BASED POWER BACK UP
SYSTEMS**

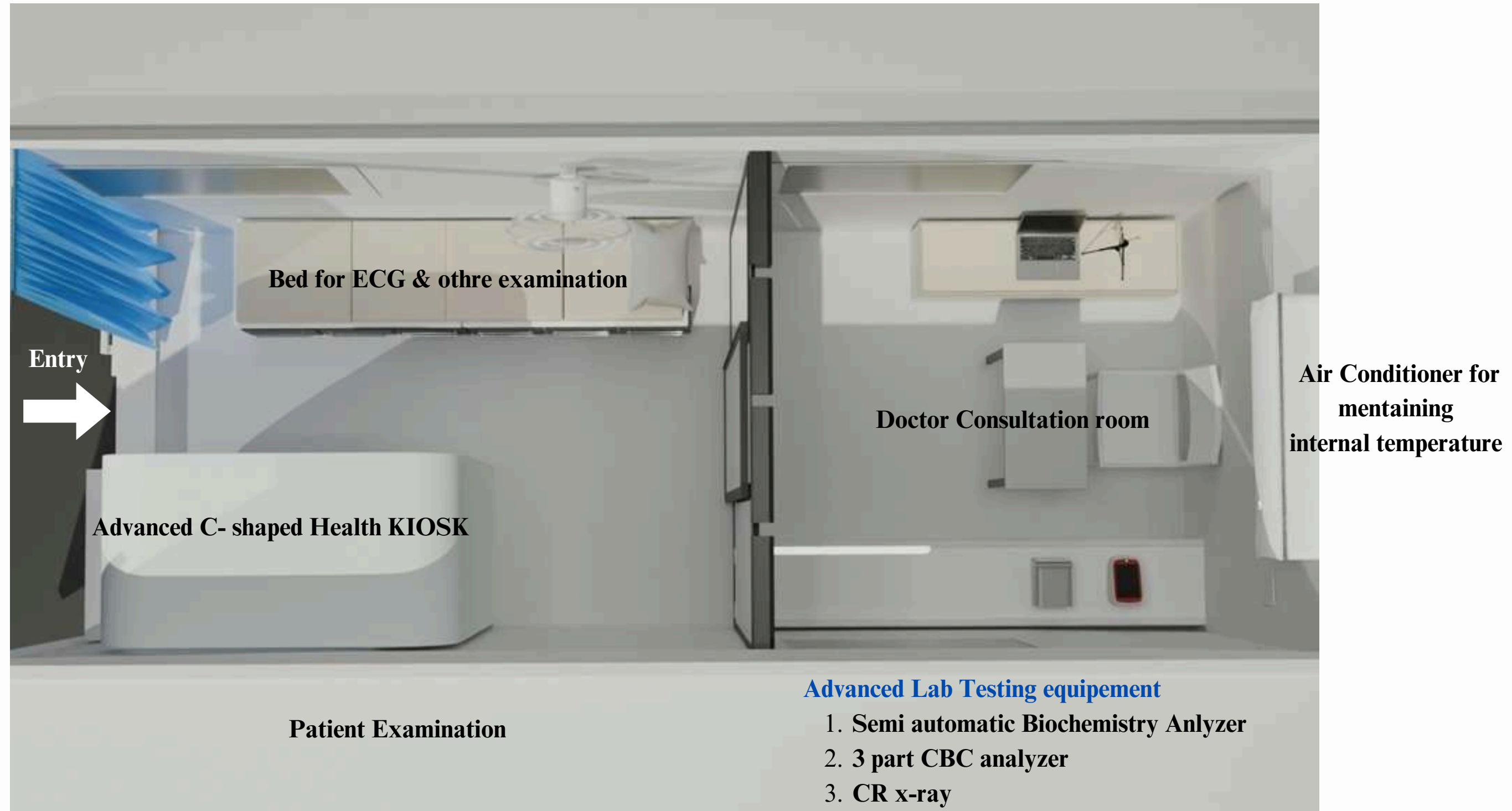


**AERIAL VIEW OF THE
HOSPITAL ON WHEELS**



**PATIENT CONSULTATION
AREA**

OVERVIEW





HOW IT HELPS TO THE RURAL COMMUNITY

- **Access to Healthcare at Doorstep:** MMUs bring doctors, medicines, and basic diagnostic services directly to villages, reducing the need for people to travel long distances.
- **Free Medical Services:** They provide free consultations, medicines, and minor treatments, benefiting people who cannot afford private healthcare.
- **Health Awareness and Education:** MMUs spread awareness about hygiene, nutrition, family planning, vaccination, and disease prevention—important in areas with low health literacy.
- **Timely Detection of Illnesses:** Early diagnosis of conditions like diabetes, hypertension, and infections helps in timely treatment and reduces complications.
- **Improved Maternal and Child Health:** Regular antenatal checkups, child immunizations, and nutritional advice improve health outcomes for mothers and children.

The background of the slide is a collage of images related to healthcare. At the top, there's a photo of a group of people, possibly a community meeting. Below that, a large, semi-transparent image shows a healthcare worker in a white coat and mask attending to a patient. To the right, there's a colorful map of India. The overall theme is public health and community service.

SOME OTHER BENEFITS

- **Strengthens Public Health Infrastructure:** MMUs extend the reach of government health services to remote and underserved areas without needing to build permanent facilities.
- **Reduces Burden on Hospitals:** By handling minor illnesses and follow-ups in rural areas, MMUs help reduce crowding at district hospitals and primary health centers.
- **Supports Health Programs:** MMUs assist in implementing national health schemes like Ayushman Bharat, Disease control, maternal health, and immunization drives.
- **Data Collection & Surveillance:** It helps to gather health data from rural areas, aiding the government in planning and monitoring disease trends and resource allocation.
- **Builds Public Trust:** Regular and reliable mobile services improve people's trust in government healthcare, leading to better health-seeking behavior.

TELECONSULTATION & TELEMEDICINES

Hospital on wheels equipped with telemedicine and teleconsultation facilities to enhance healthcare delivery in remote and rural areas. Through this technology, patients in villages can consult with doctors and specialists located in urban centers without having to travel. The MMUs are fitted with internet-enabled devices like laptops or tablets, digital diagnostic tools, and a camera for live video calls. A trained nurse or health worker in the MMU assists the patient during the consultation by sharing vital health information with the doctor in real time. After the consultation, the doctor provides an electronic prescription, and medicines are dispensed on the spot if available. If advanced care is needed, the patient is referred to the nearest health facility. This system not only improves access to specialist care but also saves time and cost for rural patients, ensures regular follow-ups, and supports the government in providing continuous and quality healthcare through digital means.



DIGITAL STORAGE FOR PATIENT MEDICAL HISTORY

patient medical history collected through HOSPITAL ON WHEELS and telemedicine services can be digitally stored and organized in various structured formats, making healthcare delivery more efficient and data-driven.

- Digital Health Records: During the registration, Each patient is assigned a unique ID (often linked to their mobile number, Aadhaar, or ABHA – Ayushman Bharat Health Account). Their health data, including diagnosis, prescriptions, lab results, and vitals, is stored in a secure cloud-based system.
- Organized by Multiple Parameters:
 1. Age-wise: Helps identify common illnesses in children, adults, and the elderly (e.g., anemia in women, diabetes in older adults).
 2. Area-wise: Allows tracking of disease patterns and healthcare needs in specific villages or districts.
 3. Gender-wise: Useful for planning maternal and child health services, or identifying gender-specific health trends.
 4. Disease-wise: Helps monitor chronic conditions like hypertension, TB, diabetes, and ensures proper follow-up.
- Use in Public Health Planning: Governments and health departments can use this organized data for epidemic surveillance, resource allocation, and targeted health campaigns.
- Access to History for Patients: Patients can access their medical history through printed reports, SMS updates, or digital health apps if available.





EMPOWERING SOCIETY FOR A HEALTHIER TOMORROW

GET IN TOUCH

PHOENIX MICROSYSTEMS

Gat No. 1532, Sonawane wasti, Chikhali, Pune- 411062

Mail: info@phoenixmicrosystems.com

Contact No.: 9130322864/ 9890698284

Web: www.phoenixmicrosystems.com

